



Kenilworth Language Institute



# Information Pack



[www.kenilworthinstitute.ie](http://www.kenilworthinstitute.ie)



# Contents

<b>Kenilworth Language Institute Information Pack</b>	<b>2</b>
Kenilworth Quality Assurance Policy	2
Kenilworth Staff	3
Location and Facilities	4
Timetable	5
Syllabus and Curriculum	5
English Language Programmes at Kenilworth	6
<b>Student Information</b>	<b>10</b>
Students' Arrival	10
Student Welfare	10
Employment and Further Study	11
Accommodation	11
Adult Social Programme	13
General Student Information	18
<b>About Ireland</b>	<b>22</b>
About Dublin	24
About Rathmines	25
<b>Kenilworth Junior School</b>	<b>26</b>
Junior School Timetable	27
Junior School Staff	27
Accommodation for Junior Students	27
Junior School	28
Junior School Social Programme	29
Kenilworth Rules	32
Experience Dublin & Ireland	35

# Kenilworth Language Institute Information Pack

## Kenilworth Quality Assurance Policy

The mission of Kenilworth is to provide professional, high-quality English language courses in an enjoyable atmosphere for both students and staff. We aim to offer rich opportunities for cross-cultural exchange and learning, to be responsive to each individual student and to offer as much support as possible during students' time here in Ireland and afterwards.

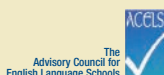
### A few good reasons to study at Kenilworth Language Institute, Dublin

- Dublin is a modern European capital with clear spoken English and a rich history and culture. Kenilworth Language Institute is ideally located on a lovely residential park just 10 minutes by bus from the city centre.
- Kenilworth is set in a spacious Victorian building and has been welcoming students from all over the world since 1996.
- Kenilworth is recognised by ACELS and the Irish Department of Education, guaranteeing our high professional standards. We are affiliated with MEI, FÁILTE Ireland, Dublin Tourism and the Dublin Institute of Technology.
- At Kenilworth, with its friendly dedicated staff, you can talk directly to course directors and staff administrators at any time.
- We offer a range of competitively-priced, year-round courses. Our teachers are highly-qualified and experienced and use the latest books and methodologies.
- Kenilworth can provide accommodation from its extensive network of local host families or the option of a hotel or modern self-catering residence.
- We organise varied and exciting programmes of extracurricular activities.



Kenilworth Language Institute

Kenilworth Language Institute,  
4 Kenilworth Square, Dublin 6, Ireland.  
Tel: +353 1 497 1499  
Fax: +353 1 497 1499  
E-mail: [info@kenilworthinstitute.ie](mailto:info@kenilworthinstitute.ie)  
Website: [www.kenilworthinstitute.ie](http://www.kenilworthinstitute.ie)





**Colm Maguire**  
School Owner/Director:



**Ann Phelan**  
Administration Officer:



**Ian O'Malley**  
Director of Studies:



*Kenilworth is set in a spacious Victorian building...*

## Kenilworth Staff

**Colm Maguire** has worked in English Language Training since he graduated from university and he has Masters Degrees from University College Dublin and Trinity College in both English Literature and Peace Studies. He has worked in Ireland and Spain. Colm is responsible for the overall direction and outside representation of the school.

**Ann Phelan** has been with Kenilworth since 1999, previously working for many years in the Telecommunications industry. Ann is in charge of all accommodation issues and student welfare; she also looks after the office administration.

**Ian O'Malley** has a Masters in Anglo-Irish Literature and has lived and worked in both Spain and Italy where he worked for the Italian Parliament. Ian directs the academic side of the school: curriculum development, resource management, teacher

coordination and the supervision of students' academic progress. He is also a teacher trainer and certified TIE examiner.

### Teachers

Kenilworth teachers are all native English speakers and fully qualified with a Third Level Degree and an ACELS recognised TEFL certification.

What happens in the classroom is the primary business of a language school and Kenilworth recognizes that quality teaching staff is a school's greatest asset. We aim to give our teachers the best working conditions and to appreciate and encourage their abilities and knowledge for the betterment of the school and the students' experience. We have a loyal core of academic staff and continuous professional development is an important part of the Kenilworth ethos. There is a strong culture of cross-communication between teachers and other members of staff and teachers are very involved in curriculum and syllabus decisions.

At Kenilworth we pride ourselves on our personal touch. Teachers are involved in the social activities programme so students will have many opportunities to mix with them outside of a class situation.

*At Kenilworth we pride ourselves on our personal touch.*

*What happens in the classroom is the primary business of a language school and Kenilworth recognizes that quality teaching staff is a school's greatest asset.*





## Location and Facilities

Kenilworth Language Institute is extremely well situated in one of Dublin's most prestigious residential areas and is served by many different bus routes. It is five minutes walk from Rathmines, one of the city's most cosmopolitan and lively suburbs.

The school is set in a historic Victorian building which has been carefully adapted for modern school use. It provides students with bright spacious classrooms equipped with video, CD and cassette recorders, large whiteboards and projectors.

### Bus Routes to Kenilworth:

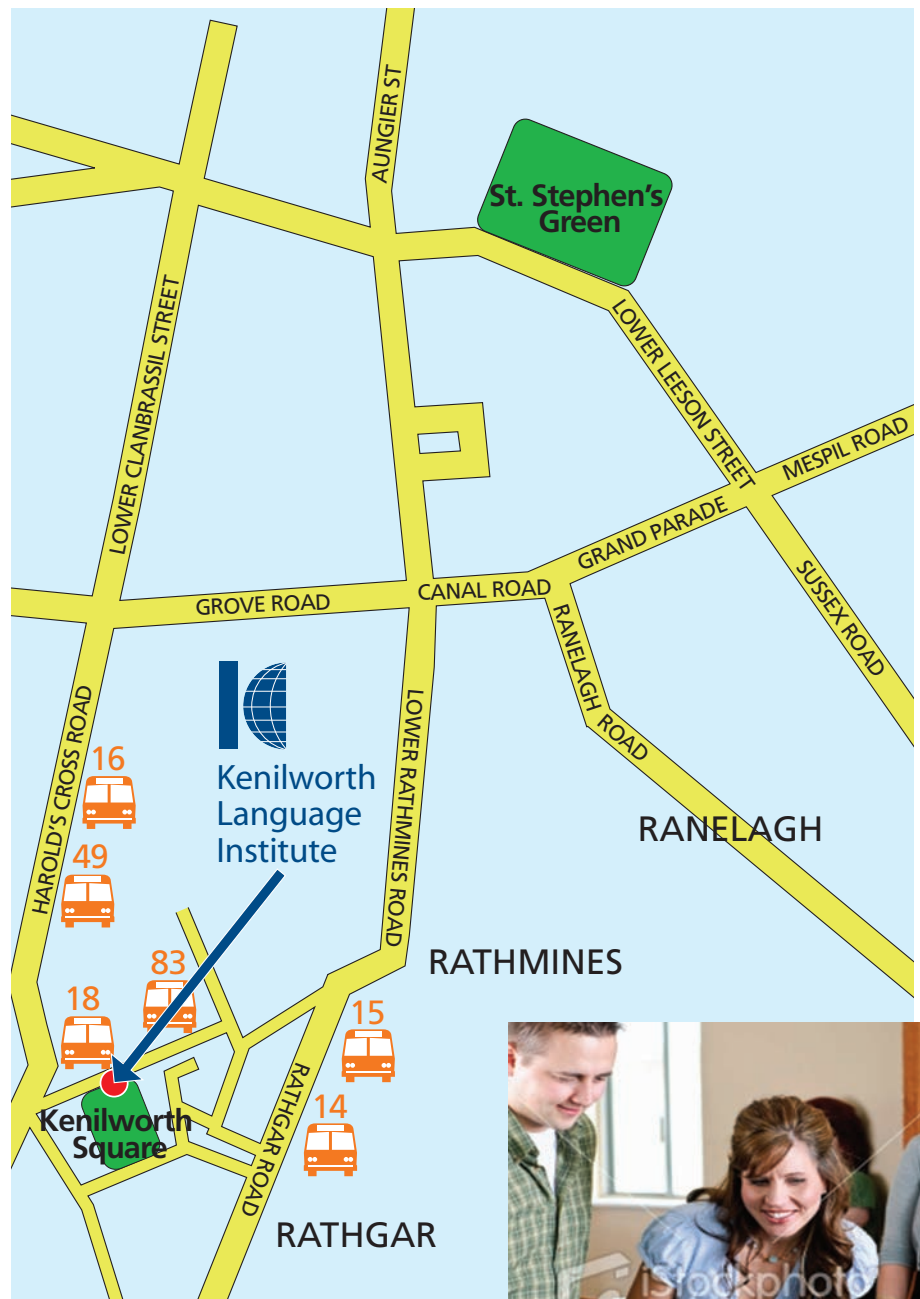
16 16A 16B 49 65 65B 15 15A 15B 15C  
14 18 83

### Coffee Room and Garden

The Coffee Room and Garden are the central communal areas of the school where students and teachers meet at break times to have coffee/tea with biscuits, to relax, read one of the magazines or just chat with other students from around the world.

### Computers and Self-Access Study Centre

The Computer Station is equipped with six computers, up-to-date software and a high speed free internet connection. There is also free WIFI internet access for your laptop. We have CD-ROMs and a guided syllabus of internet language learning resources.



*Learning a language should be an enjoyable experience...*

Our Self-Access Study Centre contains a range of supplementary course books, readers, dictionaries, DVDs and resources for out-of-class study which can also be borrowed for home use. Learning a language should be an enjoyable experience and we encourage students to take moments to read, listen or watch purely for pleasure.

### Study Rooms and Student Notice Board

Students have access to our Study Rooms every afternoon where they can use our self-study course materials, complete homework or read back over their class work for the day. Our Academic Staff are always available.

We provide a notice board for students to get information on exhibitions, shows or events in Dublin as well as accommodation or job vacancies around the city.



### Games Room and Video Room

In our Games Room we have a pool table, table football and a range of board games for students' enjoyment during breaks.

We have a video room with a projector and surround sound speakers where students can watch DVDs in the afternoon.

## Syllabus and Curriculum

Our syllabuses have three principal focus areas:

- To help students improve their English in all areas – reading, writing, listening, speaking, spelling, pronunciation and grammar.
- To provide an enjoyable atmosphere in which students can experience the usefulness of their English in real learning situations.
- To provide students with the confidence and tools to function successfully in an English-speaking country and also to give them an appreciation of the Irish culture around them.

Kenilworth's syllabuses have been developed over many years using lots of specially designed materials. Classes are task-based and interactive with students and teachers continually working together to improve language output. Class work includes pair and group work, teacher-led discussions, debates, presentations and written tasks.

*Classes are task-based and interactive with students and teachers working together to improve language output.*

### Judging the Success of our Courses

- Our written and spoken placement test ensures accurate placement of students on their arrival.
- At the beginning of each week on Monday morning an outline of the programme for the following week is discussed between the teacher and students and amendments or additions may be made.
- Students are tested at the end of every second week on aspects of their work. The teachers monitor students' progress on an ongoing basis.
- We conduct a mid-course Needs Analysis Assessment with students to provide feedback and to allow changes to the syllabus.
- At the end of the course, there is an Exit Test – a mix of general grammar and what students have covered in class. All students receive a Certificate at the end of the course with a grade in accordance with the Council of Europe Framework, based on the Exit Test and their general class performance.



## Kenilworth Timetable

### Morning General English Programme Monday-Friday

09.30 - 11.20	<b>Class 1</b>
11.20 - 11.40	<b>Break</b>
11.40 - 13.30	<b>Class 2</b>
13.00 - 14.00	<b>Lunch</b>

### Sample Afternoon Activities

14.00 - 16.30	<b>Guided Self-access Study</b> <b>Cultural Visits – Museums / Galleries etc.</b> <b>Film in Video Room</b> <b>One-to-one / Intensive / Business English</b> <b>Classes / Cultural Lessons</b>
---------------	--

### Evening Programme Monday-Thursday

19.00 - 21.00	<b>General English and Exam Preparation</b> <b>Classes</b>
---------------	---



*Class work includes pair and group work, teacher-led discussions, debates, presentations and written tasks.*



## English Language Programmes at Kenilworth

Kenilworth offers year-round General and Professional English language programmes, and all-inclusive summer programmes for juniors at our Summer Centre. During the academic year, there is continuous enrolment so students can start at any time. Monday is the normal starting day for all courses.

*What is included in the course fee?*

- Tuition
- Welcome Pack with maps and information about Dublin and Ireland
- Level assessment on arrival
- Supplementary course materials
- Use of all School facilities: Self-Access Library, Video Room, Coffee Room, Garden Area and Games Room
- Social Programme Activities
- Access to computers and free WIFI internet
- Full administrative backup from Accommodation Officer, Student Welfare Officer, Academic Director and teachers
- Diploma on completion of course

### General English Programme

The General English Programme is run at seven levels from Beginner to Advanced level (A1 – C2). The course is designed to improve students' abilities to use language accurately and fluently. It is based on the most up-to-date methodology, course books and authentic materials to give students a living language experience.

Morning classes are divided into two parts with a different teacher before and after break.

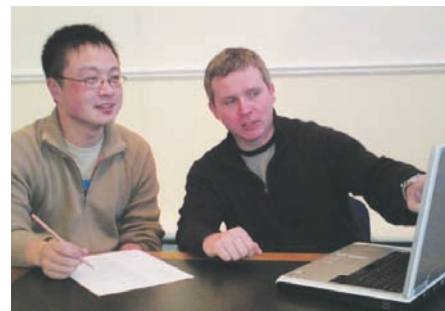
*The General English Programme is designed to give students a living language experience.*

#### Class 1

The first class tends to be book-work based. It focuses on grammar, vocabulary and developing the four main skills – Speaking, Writing, Reading and Listening. There is a consistent focus on developing practical and functional skills.

#### Class 2

In the second class, students get the chance to improve their confidence and enthusiasm in English through participating in free-practice activities, games and projects, task-based learning, speaking and vocabulary games and cultural discussions.



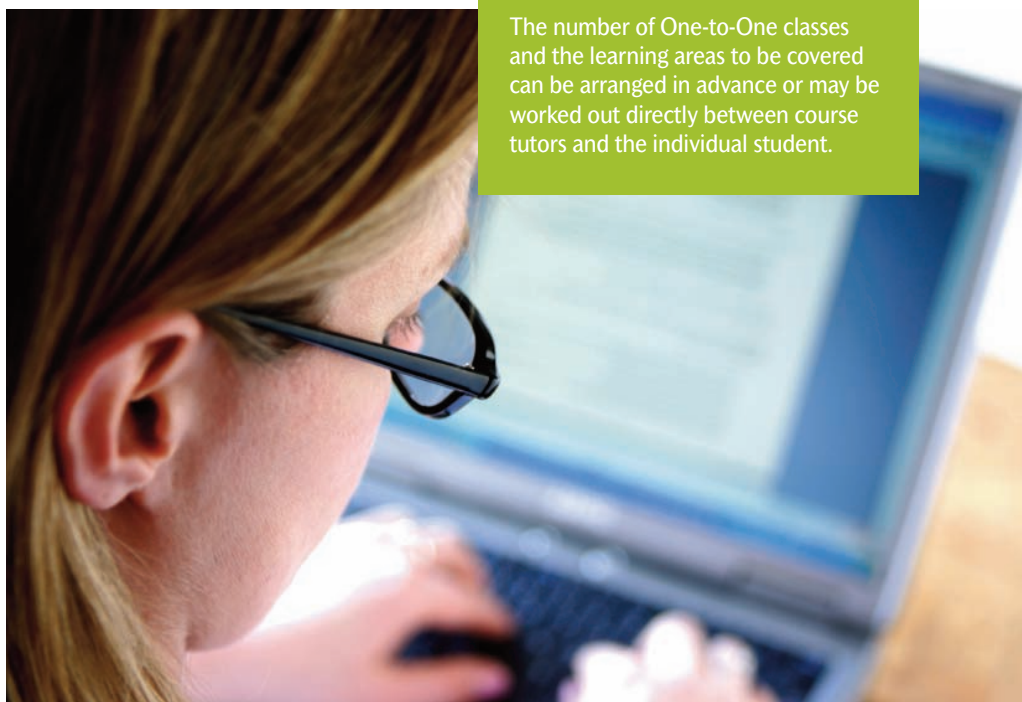
### Intensive and One-to-One English Courses

Intensive English courses are intended for those who wish to make rapid progress in English. Courses are held all year round at all levels from Beginner to Advanced level. Students may take the General English course in the morning followed by individual tuition in the afternoon. Alternatively they may have one-to-one morning and afternoon lessons. Up to eight hours tuition per day are available, as students may also attend the evening programme.

Intensive courses are designed for students who need concentrated language training and want to make rapid progress in specific areas of English over a very short time. Kenilworth has many years of experience in delivering high quality results driven courses.

In One-to-One programmes, lessons are tailor-made to suit an individual's needs. Two highly-experienced tutors work with each student to create a monitored and highly motivated learning environment.

The number of One-to-One classes and the learning areas to be covered can be arranged in advance or may be worked out directly between course tutors and the individual student.





### Evening Classes

Evening Classes are often popular with au-pairs or other professionals already working or studying in Dublin during the day who wish to improve their English language skills for work, study or exam purposes. Courses are held at Intermediate to Advanced levels and often exam preparation oriented.

Courses are held at Intermediate to Advanced levels and often exam preparation oriented.

Course Days:	Monday – Thursday
Course Hours:	19.00 to 21.00
Start Date:	Start any week



### Exam Preparation

Kenilworth prepares students for all major English examinations including *Cambridge (First Certificate/Advanced etc)*, *IELTS*, *TOEFL*, *TOEIC* and *TIE*. These exams are recognized by universities, employers and educational authorities in many countries as evidence of a high standard of spoken and written English. More and more students and institutions are using external, world recognised examinations as a way of focusing their English language studies and obtaining very useful qualifications.

Our courses are designed to help students master the specific techniques and skills required for success in these examinations. Students will receive individualised advice concerning which areas of their English they need to concentrate on to be successful in the exam and teachers will also provide guidance on additional self-study.

Kenilworth Language Institute has a consistently high rate of success with its exam students.

Different Exam preparation options include:

- General English plus afternoon one-to-one exam preparation
- General English plus Assisted Self-Study outside of class
- A blended General English/Exam Preparation morning course
- Morning General English plus Evening Exam Preparation Course





## Year Round Academic Programme

Year Round Academic Programmes are being provided to meet a growing need from students who want to spend a longer time on improving their English in a planned and structured manner. Because of the level of personal attention at Kenilworth Language Institute, the academic year can be structured to suit individual student's needs. Our Academic Director and teaching staff will design a suitable study path taking into consideration the student's arrival time, level of English and their academic aim for the year. Students are provided with new challenges and varied opportunities for enhancing both general and specific English proficiency and often obtaining an internationally recognised qualification. We can structure programmes for students at all levels, from Elementary to Advanced. This extended programme offers students a unique opportunity to return to their home country with skills that will greatly improve their future career prospects.

Our Academic Year Programme offers 20 hours per week of tuition with the possibility of preparing for external exams, plus guided self-study afternoon activities. Students can begin any month of the year and programmes are flexible to suit individual students' needs. Students who wish to participate in a more intense academic study programme can incorporate additional afternoon or evening tuition into their year.

## Academic Preparation/ Foundation Courses

Kenilworth has a strong academic relationship with the Dublin Institute of Technology, one of Ireland's most respected third level institutions. Kenilworth provides a pre-University preparation course for students wishing to enter undergraduate or post-graduate programmes at DIT.

Our Academic Preparation Programme gives students a sound foundation for further study. The programme concentrates on developing the important skills of academic reading and writing, note taking and speaking. We cover specific skills such as making presentations, writing assignments, listening for gist, understanding and using academic English. We also offer an induction into differing studying methods and techniques, and using specific functional language such as how to interrupt in a lecture or deal with college administration.

On achieving the appropriate English language level at Kenilworth Language Institute, students who have the required academic background to meet DIT's specifications are assured direct entry into the study course of their choice at DIT. See: [www.dit.ie](http://www.dit.ie)

## Business English

Business English Programmes are driven by the professional needs of the participants.



Areas covered include general business skills such as preparing and making presentations, participating in meetings or socializing in a business environment.

These courses are designed in a practical way to cover the English used in everyday business situations and are ideal for students already working or training in the areas of General Management, Administration, Marketing, Sales and Customer Relations. This course helps professionals become more confident and competent in their use of English in a business context.

Students may take Business English as part of a combined General English Course plus afternoon business lessons, or as a closed group or one-to-one course. Students taking these courses may also prepare for the TOEIC exam.

*Sample Business English Course Content:* Business Communication/ Sales Talk and Marketing/ Meetings and Presentations/ Grammar Activities and Business Vocabulary building/ Telephone English/ Analysing business figures/ Key Business English Writing Skills/ Effective Business English reading skills/ E-mail and Internet communication/ Travel/ Trade and Negotiating/ Entertaining/ Register – adopting appropriate styles of formality in writing and speaking in different business situations.





## English for Special Purposes

Kenilworth Language Institute provides One-to-One and Closed Group Courses in the English of:

- Aviation and Air Traffic Control
- Banking, Finance and Foreign Exchange
- Law
- Military Organisation and Operations
- Medicine
- Quality and Standards
- Sales and Marketing
- Travel and Tourism

Some of our students like to take General English Group Classes in the mornings and

one of these ESP Options on a One-to-One basis in the afternoons.

## Non-Native Teachers Development Course

Our Teacher Development courses have been specifically designed for non-native teachers of English at primary-school and secondary-school level. They provide an opportunity to develop English language skills; enhance knowledge of current teaching methodologies and receive suggestions for fun and practical ideas for use in the classroom as well as uses of new technologies in language teaching. The sessions involve a variety of workshop, communicative and lecture formats. Cultural and social aspects of modern Irish

history, society, politics and the arts are discussed and presented in a manner that complements the theory and methodology component of the course. The cultural input sessions are further reinforced by an afternoon social programme and visits to places of cultural interest.

Kenilworth's qualified teacher-trainers are experienced in teaching the ACELS Certificate in English Language Teaching (CELT) and knowledgeable in using up-to-date methods with learners at all levels of language learning.

Course dates are by arrangement for closed groups.

*Our Teacher Development Programmes have been specifically designed to develop English language skills and enhance knowledge of current teaching methodologies.*

## Sample Programme for Teacher Development Courses

Typical Language Component	The Methodology Component	Historical and Cultural Sessions
Integrated skills	The Lexical Approach	Political & historical background in Ireland
Authentic listening	Task Based Learning	Anglo-Irish Literature
Vocabulary in context	The Communicative Approach	Drama
Grammar and Use of language	Drama in the classroom	The Great Poets
Varieties of English	Literature and stories	Irish Food
Form and Function	Music & Song	Irish Music
Reading skills	Pronunciation, Stress & Intonation	
Speaking skills	Authentic Materials	<b>Sample Afternoon Visits</b>
Writing skills	Exploiting the Course book	Visit to National Gallery
Teaching pronunciation	Games in the classroom & activities using no resources	Visit to Guinness Storehouse
Functional Language	NLP	Visit to Dublin Castle
	Multiple Intelligences	Visit to Kilmainham Jail
	Learning Styles and Strategies	Visit to Malahide Castle
	Whole Brain Learning	Visit to Dublin Writers' Museum
	Examination of materials available for teaching literature as part of foreign language studies	Visit to National Museum

## EU Funding

Teachers from an EU (or associated) country may obtain a grant to attend one of the Kenilworth courses for teachers. All our courses for non-native teachers of English are developed according to *Comenius* guidelines and candidates from Europe can apply for *Comenius* grants to attend our courses. Please indicate that you are a *Comenius* grant applicant at the time of booking your teachers' course with us so that we can supply you with all the documentation relevant to your application. Alternatively, visit the website, [www.ec.europa.eu/education](http://www.ec.europa.eu/education)





# Student Information

## Kenilworth Students

Kenilworth Language Institute receives students from all over the world.

**Minimum Age:** Students in the General English Programme are at least 18 years of age; younger students attend our Junior Summer Centre during July and August or our main school as part of a closed group during the rest of the academic year.

**Class Size:** To ensure our students receive the maximum benefit of studying at Kenilworth we limit our class numbers. This offers students the advantage of personal attention from the teacher. Our classes never exceed 15 students and usually have less than 10 students during the academic year.

## Students' Arrival

### Arrival in Ireland

If a student books a transfer with the school our driver will meet them at the airport on their arrival in Ireland and take them to their accommodation. The host family will show the student where the school is on the first day or if staying in a Hotel, the receptionist will explain the quickest way to the school.

If a transfer is not required, students may take a taxi or bus from outside the airport. (Visa requiring students will need to produce a letter on arrival at the airport to Immigration Control.)

*We make every effort to ensure a new student joining the school will quickly get to know his or her fellow students...*

## Student Welfare

Kenilworth Language Institute is interested in the welfare of students as a whole, not just in their academic progress. Our Student Welfare Officer and Accommodation Officer are always available to help students with any problems they may encounter. These can range from help with renewing a visa application, to providing information on places to visit in Ireland, to explaining particular Irish customs and habits, to simply sharing some time talking.

A 24-hour emergency telephone number is provided to all students in case a problem of a serious nature arises. The school can call on hospitals, doctors, dentists and other health professionals if a student requires attention. Where the student does not have adequate English, a translator can sometimes be provided.

We make a big effort to encourage students to look out for each other, help each other in class and make everyone feel part of the group.

## First Day at Kenilworth

On the first day students will be greeted by our friendly and welcoming reception staff. They will be shown the college and any questions they might have will be answered.

Students are given a written placement test followed by an oral interview with the Academic Director. We do a detailed Needs Analysis to ascertain the student's specific needs and abilities and there is a chance to talk about any initial concerns. The student is then placed in a class at the appropriate level and can begin their course immediately. We make every effort to ensure a new student joining the school will quickly get to know his or her fellow students and become familiar with the work of the class. We always ask our existing students to look after any new student, make them feel at home and help familiarise them with the city.

Groups of students arriving are taken into the city centre after class on their first day. They are shown the main city landmarks such as Trinity College and the Spire, the shopping areas and where to get buses.





## Employment and Further Study

The economy in Ireland has weakened over the last year but there are still jobs available in many areas. We provide students with help in finding a job. We have Jobs Workshops where we give advice on how to find a job in Ireland. We show how to use Irish jobs databases and make sure the English translation of a student's CV sounds as professional as possible. We also offer an advisory service for students who would like to study at university in Ireland or internationally.

### Non-EU students

If non-EU students want to work while studying in Ireland they must be registered as a full-time student. They are then able to work up to 20 hours a week when attending their course and full-time during your holiday period. This rule applies only if they are attending a full-time course of at least a year's duration leading to a recognised qualification. Further information is available from the Department of Justice, Equality and Law Reform website at [www.justice.ie](http://www.justice.ie).

## Accommodation

The most popular choice for student accommodation is Homestay, which is available all year round. Host families provide breakfast and an evening meal from Monday to Friday and breakfast, lunch and evening meal at weekends. All families are situated on a convenient bus route to the school and city centre.

Students often benefit hugely from staying with an Irish family, which gives them the possibility to converse and encounter new cultural experiences in a natural and warm environment. We put a strong emphasis on the quality of our host families. The Accommodation Officer visits and checks all the host families and she speaks to them regularly by phone throughout the student's stay.

### Irish Houses

Irish families generally live in houses with gardens away from the centre of Dublin City. Ireland has always been famed for its hospitality and staying with a host family is one of the best ways to experience this first-hand. Many students find staying with an Irish family a very rewarding experience as it offers them a unique insight into Irish culture and provides the perfect opportunity to improve their English.

### Hotel and Guesthouse Accommodation

If students require hostel or hotel accommodation during their stay in Ireland we are happy to help them book suitable places to stay in the area. Kenilworth has many excellent hotels and hostels within easy walking distance of the school. There are three main hotels in Rathmines, the commercial area near Kenilworth: the *Days Inn*, the *Uppercross House Hotel* and the *Travelodge Hotel*.

### Residential Accommodation

Kenilworth can arrange residential accommodation for adults in Student Self-Catering Accommodation. These are prestigious new developments of self-catering apartments designed and purpose built for student living that consist of a selection of 3, 4 & 5 bedroom apartments all en-suite with spacious living and kitchen areas. All apartments are fully fitted and furnished to a high standard, catering to all student needs and delivered by a friendly and efficient management team. The buildings are fully secure with authorised access only. The residences also offer students plenty of recreational areas. A bus route to Kenilworth is available directly outside the complexes.





### Host Families

Host families provide a room with a study desk, laundry facilities, breakfast, evening meal and a packed lunch from Monday to Friday and breakfast, lunch and evening meal at weekends. Only one student of each nationality is placed in a family unless students request an alternative arrangement or when they come as part of a group. Unless otherwise requested, students have their own room. All students can be confident that their host family will be welcoming, friendly and informative and will encourage you to integrate and participate in family life. Host families provide practical assistance when needed whilst at the same time providing privacy and security.



*A full Irish breakfast – for special occasions!*

Some long term students prefer to move out and live on their own at certain point. Kenilworth can offer advice on where best to search for accommodation and what areas are most safe and practical to live in.

*Kenilworth is just 10 minutes from the City Centre by bus and has many excellent hotels and hostels within walking distance of the school.*

### Irish Food

Irish breakfast nowadays is usually a light meal - fruit juice, cereal, toast and marmalade, tea or coffee. A full Irish Breakfast is mostly had on special occasions. Home-made brown bread is an Irish speciality and Ireland is renowned for its dairy products and fresh meat and fish.

Lunch on working days is generally a snack or sandwich. The main meal (usually meat or fish served with vegetables and dessert) is eaten early about 6 or 7pm so that everyone is free to go out again for the evening.

Breakfast and dinner are served by the host family. Your dietary requirements also need to be discussed on arrival as it is imperative to your well-being to ensure that the host family understands your eating habits.



## Adult Social Programme

Enjoy barbeques in the School Garden, visit one of Dublin's museums or go on one of our excursions outside the city.

The cross-cultural aspect of your experience in Dublin is very important to us and the Kenilworth Social and Cultural Programme is a big part of this. Kenilworth organizes many extra-curricular activities during the academic year such as lectures, videos, barbeques, excursions outside the city, tours of galleries and museums and, of course, visits to good Dublin Pubs. Many students greatly value this opportunity to meet and form new friendships with other students from different countries and cultures and to interact with their teachers outside of a class situation. Excursions provide students with a unique opportunity to practise their English in authentic settings.

We spend a lot of time and energy making sure that the Social Programme is as varied and interesting as possible and have a dedicated co-ordinating team who organise activities, tours and visits throughout the year. Kenilworth guides are experienced and knowledgeable about Dublin's most interesting places and features.

- We organise a minimum one afternoon guided tour a week to a place of interest in Dublin.

- We show at least one English language film a week in the afternoon (with popcorn provided.)
- We make information available on our 'What's On' Notice Board about visits, excursions and events around the city which students may enjoy.
- Students attending all courses at Kenilworth have access in the afternoons to our self-access study centre, free internet, study rooms, games room, video room, garden and coffee room.
- Weekend excursions are optional during the academic year and are usually not included in the course fee.
- Students may have to pay admission charges on some excursions. When out-of-Dublin tours are organised, students pay a fee to cover the cost of coach hire and any entrance charges required.
- We organise evening activities, such as a trip to a pub to listen to Irish music.
- We organise fun activities such as bowling or Quazar, a Treasure Hunt, a Table Quiz or a Talent Show.
- We are constantly seeking to develop and expand our Social and Cultural Programme to enrich our students' experience during their stay in Ireland.

*Enjoy barbeques in the School Garden, visit one of Dublin's museums or go on one of our excursions outside the city and get to practise your English in authentic settings.*



*Enjoy  
barbeques  
in the  
School Garden*



## Visits to Museums and Galleries: Some sample information

*The National Gallery of Ireland:* Established by an Act of Parliament in 1854, the National Gallery first opened its doors to the public in January 1864. At the time of its inauguration there were just 105 paintings in the collection (the first purchase was 15 paintings bought in 1856 in Rome). Today the collection boasts over 2,440 paintings, 5,230 drawings, water-colours and miniatures, 3,066 prints, 331 pieces of sculpture, vestments and objet d'art, making it one of the finest collections of European art.

*Christ Church Cathedral* was founded in around 1030AD by the Viking king of Dublin and the city's first bishop. It is located in the former heart of mediaeval Dublin and is of central historical significance to the city. As part of the tour, you can also visit Dublinia and the Viking World.

*Kilmainham Jail* first opened in 1796. Its historic importance was assured by the men and women who were held or died here for their nationalist ideals. Empty of prisoners since 1924, it is filled with history. It has aptly been described as the 'Irish Bastille'.

*The Chester Beatty Library*, voted European Museum of the Year in 2002, houses a collection of manuscripts and artistic treasures from the great cultures and religions of the world dating back to 2700 BC.

*...we try to give students an appreciation of sports that are popular in Ireland, such as gaelic football, hurling, tag rugby, cricket or ultimate frisbee.*

## Sports in Dublin

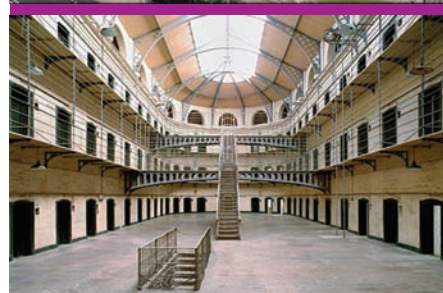
Ireland is a country that loves sports of all kinds and has bred many sporting stars at world and Olympic level.

As part of our Kenilworth cultural programme, particularly in the summer, we try to give students an appreciation of sports that are popular in Ireland which they might not be familiar with in their own country, such as Gaelic Football, hurling, tag rugby, cricket or Ultimate Frisbee.

Kenilworth is proud to organise (and occasionally win) the annual Inter-Schools Football Charity Shield between Dublin language schools which raises much needed money for the charity GOAL. See: [www.goal.ie](http://www.goal.ie)

Kenilworth also organises trips to watch sporting events in Ireland, such as visits to the 82,000-seater Croke Park Stadium to see a Gaelic Football or Hurling match.

Near to Kenilworth, there is a public swimming pool and Gym right in the centre of Rathmines which students can avail of. There are also private gyms in the area including Fitness Together, Shapes Fitness for Women and LA Fitness.



*Kenilworth Football Team, Inter-schools Cup Winners*





Kenilworth is lucky to be located just 10 minutes from one of the most beautiful parks in Dublin, Bushy Park. It has football fields, a skateboarding area and tennis/basketball courts, a children's playground and a large wood where you can see a waterfall and duck pond. We take students to Bushy Park to play many different sports and particularly during the summer have regular sports days there.

Dublin provides excellent opportunities for the student who likes sport and leisure. Golf, horse riding in the Phoenix Park, sailing and water sports in Dublin Bay are all available at reasonable cost. You can also enjoy hill-walking, nature trails or strolling on some of Dublin's beaches.





## Sample evening activities organised by Kenilworth



**Evening of live music with a live band** – a night of traditional Irish music and dance.



**Evening Greyhound Racing at Harold's Cross** – Ten minutes walk from Kenilworth. Full bar and restaurant. Place a bet on each race or just watch the action.



**Live Concert from ITO** – the rock band of one of our core teachers, Johnny.

**Evening Tag Rugby Tournaments** – watch or compete in a mixed sport and socialise with Irish people afterwards with full bar and barbeque.

**Theatre Visits** – modern or classical performance at one of Dublin's main theatres.

### Weekend Trips and Excursions

Kenilworth organises excursions out of Dublin City every Saturday during the summer months to places such as Howth, Bray or Malahide Castle. During the rest of the academic year, weekend excursions are optional and not included in the course fee.

*One-Day Trips:* Glendalough and Powerscourt Gardens, Kilkenny city or Newgrange and the Hill of Tara are all within an hour and a half drive of Dublin.

*Two-Day Trips:* Galway and the Aran Islands, Cliffs of Moher, Ring of Kerry or Donegal. All of Ireland is easily accessible from Dublin, only a few hours away by bus or train. And you can still be back in time for class on Monday.

### Evening Activities and Nightlife in Dublin

There is something going on in Dublin every night of the week, from Traditional Irish Folk Groups to rock concerts, from theatre to cinema to classical music at the National Concert Hall. Dublin truly is a diverse city with something for everyone. In the summer the long, bright evenings

mean that outdoor activities can be enjoyed until late into the night.

Areas such as Temple Bar attract many young people. At night Dublin is just as lively as during the day. There are hundreds of pubs with live music or dancing. You can also enjoy your pint just chatting and having fun with Irish or international friends.

Dublin is famous for its music. There is a great choice of classical, pop, rock, dance and jazz concerts and the 'singing pub' provides a unique opportunity for sampling traditional Irish music and traditional Irish beer. The work of U2, Enya, and the Corrs is known world-wide, not to mention Sinéad O'Connor, Van Morrison or Westlife.

A wide variety of drama is offered in Dublin's excellent theatres, such as the Abbey, the Gate and Samuel Beckett, including works by both international playwrights and famous Irish ones such as Bernard Shaw or Wilde. Some famous Irish Hollywood actors such as Colin Farrell and Liam Neeson began their careers on the Dublin stage. Dublin is also blessed with a wide range of cinemas.

*All parts of Ireland are easily accessible from Dublin, only a few hours away by bus or train...*





*At night Dublin is just as lively as during the day.  
There are hundreds of pubs with live music or  
dancing...*



*Kenilworth organises excursions out of Dublin  
City every Saturday during the summer months.*





## General Student Information

### Medical, Personal and Travel Insurance

Kenilworth advises all students to take out sufficient medical and personal insurance before they arrive in Ireland. EU citizens should bring an E111 form with them for medical insurance purposes. This entitles you to free emergency hospital care and attendance at certain doctors. If you are from outside the EU, medical insurance can be arranged through the school. You should also let Kenilworth know if you have a medical condition. If any student falls ill during their time at Kenilworth, we will do everything we can to help, from organising to see a doctor or taking you to hospital. Students are not insured by the school or host family against illness, theft or the loss of personal possessions. Personal insurance cover is therefore recommended. You are also recommended to take out travel insurance in case of accident or loss of baggage.

### Travel to Ireland

Dublin is very easy to get to. There are direct flights from all major European cities and from the USA and Middle East. It's less than an hour from Paris, London or Amsterdam by plane.



## Dublin is very easy to get to.

Dublin is the base for the low fares airline Ryanair and the national airline Aer Lingus also offers excellent low price flights. For further information on Irish Airlines see: [www.dublin-airport.com](http://www.dublin-airport.com) [www.aerarann.ie](http://www.aerarann.ie) [www.aerlingus.com](http://www.aerlingus.com) [www.ryanair.com](http://www.ryanair.com)

Direct roll-on/roll-off sea ferries operate from France to Ireland and from several ports in Britain. To access Ireland by ferry see: [www.irishferries.com](http://www.irishferries.com) [www.poirishsea.com](http://www.poirishsea.com) [www.stenaline.co.uk](http://www.stenaline.co.uk)

### Buses and Trains Around Ireland

*Bus Éireann* is the main bus service linking cities and towns in Ireland. Busáras is the main bus station. You can get discounts on travel with a valid student card. For more information see: [www.buseireann.ie](http://www.buseireann.ie).

*Iarnrod Éireann* (Irish rail) provides train services from the two main Dublin stations, Connolly and Heuston, to towns and cities in Ireland. You can also get discounts on travel with a valid student card. See: [www.iarnrodeireann.ie](http://www.iarnrodeireann.ie) [www.irishrail.ie/home](http://www.irishrail.ie/home).



## Car Hire in Ireland

Students can easily arrange to have a hired car waiting for them when they arrive. The simplest and most economical way is to book a fly-drive inclusive package through a travel agent. Alternatively we can help students arrange their car hire after their arrival in the school. During the peak months of July and August early booking is advisable. See: [www.europcar.ie](http://www.europcar.ie), [www.irishcarrentals.com](http://www.irishcarrentals.com), [www.argus-rentacar.com](http://www.argus-rentacar.com)

## Driving

Driving is on the left-hand side of the road. The measurement of speed limits on Irish roads is normally in kilometres per hour (km/h). To plan your journey time, distance and road route when travelling in Ireland see: [www.aaireland.ie/routes](http://www.aaireland.ie/routes)

## Emergencies

The emergency telephone numbers in Ireland are 999 or 112. Ring one of these numbers if you need the police, fire service, ambulance or the coastguard and you will be connected.

## Time

Ireland follows the same system as Britain (Greenwich Mean Time)

## Irish Climate

Students should bring strong shoes or boots, a waterproof coat or jacket, jeans and warm sweaters. Alternatively, they may prefer to buy suitable clothes when they get here – clothes can be very good value in Ireland. Students should come prepared for all types of weather during their stay in Ireland. For information on Irish weather today and a forecast for the week see: [www.met.ie](http://www.met.ie)

## Electrical current

The standard electrical supply is 230 volts AC (50 Cycles). Small travel transformers or adaptors may be needed to operate appliances.

## Banks

Banks are open Monday to Friday from 10.00 a.m. to 4.00 p.m. Banks in Dublin stay open until 5.00 p.m. on Thursdays. Bank machines in Ireland accept 'Plus' and 'Cirrus' symbols. Students are advised to change their bank notes at banks and Bureau de Change to get the best exchange rate. For information on the major bank operators in Ireland, please see: [www.bankofireland.ie](http://www.bankofireland.ie), [www.aib.ie](http://www.aib.ie), [www.permanenttsb.ie](http://www.permanenttsb.ie)



*Yes, it does rain in Ireland but this is why the country truly is so green.'*

## Opening a bank account

In order to open a bank account in Ireland, you must have a PPS number (with the official statement showing the number), your passport and evidence of address in Ireland. Kenilworth can help students in dealing directly with one of the Irish banks.

A PPS number is compulsory if students wish to work in Ireland. We will give students a letter so they can apply for a PPS number and tell them how to obtain one.

Visit [www.revenue.ie](http://www.revenue.ie) for additional information.

## Currency

The currency in Ireland is the Euro. If you need to change money, the best place is in the bank. For an up-to-date exchange rate please see the currency converter: [www.oanda.com/converter](http://www.oanda.com/converter)



## PPS Number

Your Personal Public Service Number (PPS No.) is a unique reference number that helps you to gain access to social welfare benefits, public services and information in Ireland. State agencies that use PPS Numbers to identify individuals include the Revenue Commissioners and the Health Services Executive (HSE).

## Applying for a PPS Number

To apply for a PPS number, the following documentation must be provided:

- Current Valid Passport or National ID Card.
- Evidence of either birth / work / unemployment / residency / tax liability / education in your own native country
- Evidence of address in Ireland (letter provided by Kenilworth)
- A PPS Number is necessary to have if you wish to work in Ireland.

## Mobile Phones

Mobile telephones can be brought into Ireland. Students with subscriptions to GSM services, providing they have a roaming agreement with the Irish network operator(s) may use their subscription. Pay-as-you-go mobile phones or SIM cards can also be purchased on arrival in Ireland and are not expensive.

For more information on the major mobile phone operators in Ireland see:  
[www.vodafone.ie](http://www.vodafone.ie) [www.web.o2.ie](http://www.web.o2.ie) [www.meteor.ie](http://www.meteor.ie)

## Fees and Tax Refunds

To get a tax refund on college fees please visit [www.revenue.ie](http://www.revenue.ie) for further details.

## School Holidays

Kenilworth is closed on the dates below. It also closes for two weeks every Christmas.

Date	Holidays
January 1	New Year's Day
March 17	St. Patrick's Day
Easter Monday	April Holiday
First Monday in May	May Holiday
First Monday in June	June Holiday
First Monday in August	August Holiday
Last Monday in October	October Holiday
December 25	Christmas Day
December 26	St. Stephen's Day



## Telephone

*Dialling within Ireland:* If you are calling from a mobile to a landline you need to add the area code. For example, if you're dialling Kenilworth Language Institute in the '01' area of Dublin, then you need to dial (01) 497 1499.

*Dialling into Ireland:* When making a call into Ireland from another country, the lead zero of the area code is dropped and the country code for Ireland '353' is added. For example, from Italy, to reach Kenilworth you will dial 00-353-1-497 1499.

*Dialling out of Ireland:* When making a call out of Ireland to another country, the international access code is '00' followed by the country code for the country you are calling, followed by the area code then the phone number.

For a list of International Area Phone Codes see:  
[www.countrycallingcodes.com](http://www.countrycallingcodes.com)

To access a phone number within Ireland see: [www.11850.ie](http://www.11850.ie)  
[www.goldenpages.ie](http://www.goldenpages.ie)







## Visas

*\* European Union and Swiss national students do not need Visas to study in Ireland.*

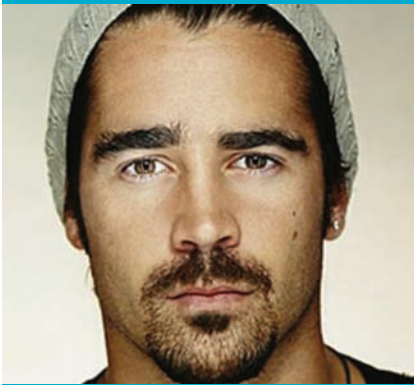
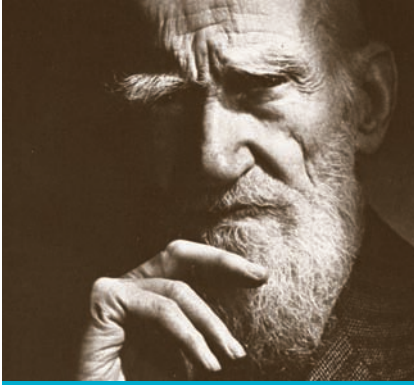
European Union and Swiss national students do not need Visas to study in Ireland. Students of other nationalities should contact the Irish Embassy or consulate in their country to see if they require a visa. Be aware of the difference between a 'C' Study and a 'D' Study visa. If a course lasts for more than three months a D-Study VISA will be required. Visa students are required by the Irish Government to pay all fees in full before their arrival in Ireland.

When a student has paid the course fees,

Kenilworth will immediately inform immigration of their enrolment so they can apply for a VISA.

Non-EU students who do not require a study visa, in the full sense, will still need proof of enrolment at our school to be allowed to enter Ireland as a student.

In some cases immigration officers may decide to refuse entry to Ireland even to students who have been granted a study visa. Kenilworth refunds all payments if a VISA application is refused but do retain an administration charge. Kenilworth also accepts students from other colleges in Ireland provided they have the necessary attendance record.



Irish people have excelled internationally in many different areas such as literature, music, cinema and sport.

# About Ireland

## Landscape

Located North West of Mainland Europe on the Atlantic Ocean Ireland is the twentieth-largest island in the world and has about 4 million inhabitants. From mountains to mystical lakes and majestic castles there is huge diversity in Irish landscape. Visitors marvel at the unspoilt Irish countryside, clean beaches and magnificent coastline. Yes, it does rain a lot but this is why Ireland truly is so green.

## People and Hospitality

English is the first language in Ireland and is spoken with enthusiasm, clarity and creativity. The Irish are renowned for their friendliness and for their tradition of hospitality. They have also earned a reputation for academic excellence over the years. Education and the skills of communication have always been highly valued. The Irish love to talk to visitors, to listen and to encourage others to speak English, an ideal environment for language learning.

## A Mix of the Modern and the Traditional

Ireland has undergone rapid industrial and economical development over the past thirty years without losing its own distinctive identity or its strong sense of traditional values. Ireland is a young and vibrant place to come and study.

*The Irish are renowned for their friendliness and for their tradition of hospitality.*

## Culture

The richness of Irish culture is not a matter of monuments. There is the strength of the country's oral and musical traditions at the centre of community life and a rich history of learning and culture which dates back many hundreds of years. For such a small country, Ireland has earned a remarkable standing in the world. For example, it has produced many famous writers such as Jonathan Swift, WB Yeats, Samuel Beckett, George Bernard Shaw, Oscar Wilde and James Joyce.



*The St Patrick's Day Festival and Irish dancing are just two manifestations of Irish culture that have become worldwide phenomena.*





*From mountains to mystical lakes and majestic castles, there is huge diversity in Irish landscape... and it's all easily reachable from Dublin on a weekend excursion.'*





# About Dublin



*One of the biggest attractions of Dublin is often the people themselves, the inspired talent for talk and conversation...*

With a population of approximately 1.5 million, Dublin has all the advantages of a capital city while retaining the charm and warmth of a glorified village. It is situated on Dublin Bay which forms a sweeping crescent from the Hill of Howth in the north to Killiney in the south.

Dublin is over one thousand years old. It began as a Viking settlement and the centre of the city has moved very little in those one thousand years. It is a city whose human history is clearly marked on every street, from the bullet holes of the 1916 Rising that you can still see on O'Connell Street to the fine Georgian architecture that dates back to British rule in the seventeenth century.

Dublin maintains a vibrant, modern and cosmopolitan outlook. It is a city of art and culture: visit the tower where Joyce began his masterpiece *Ulysses* or the studio where U2 have recorded many of their albums. You can see where Handel's *Messiah* was first performed or sample one of Ireland's finest inventions, *Guinness*.

One of the biggest attractions of Dublin is often the people themselves, the inspired talent for talk and conversation, the easy pace and rhythm to life. Dubliners love meeting people from other countries and learning about their cultures. Locals with whom our students come into contact, regularly form strong friendships and stay in touch long after the students have returned to their home countries.

Dublin boasts a wide range of parks from the beautiful *St. Stephen's Green* in the city centre to the *Phoenix Park*, Europe's largest municipal park. There are golf courses, beaches and hiking trails running alongside Dublin's Bay sea coast.

## Travel in Dublin

To avail of a student discount for all your travel requirements you can contact [www.studenttravelcard.ie](http://www.studenttravelcard.ie). To view detailed street maps of Dublin please see the link [www.softguides.com/dublin/maps/index.html](http://www.softguides.com/dublin/maps/index.html).

The Luas line (Tram) runs from St. Stephen's Green to Sandyford (Green line) and from Connolly Station to Tallaght (Red line). Students may be entitled to discounts with a valid student card. For more information see: [www.luas.ie](http://www.luas.ie).

In addition, there are thousands of taxis to take you to your destination.





Dublin maintains a vibrant, modern and cosmopolitan outlook. It is a city of art and culture...

## Shopping in Dublin

Dublin is a lively city, with some great (and affordable) shopping. Most shops in Ireland open from 9.00 - 18.00, Mondays to Saturdays. There is generally late shopping until 20.00 or 21.00 on Thursdays and Fridays. Supermarkets and some shops are now open on Sunday from 12.00 to 18.00.

*Grafton Street* is Dublin's most popular and upmarket shopping street and is positioned between Trinity College and St Stephen's Green. *Henry Street* on the other side of the city has an assortment of popular stores, the ILAC shopping centre, the newer Jervis Street Centre and the famous outdoor Moore Street food market nearby.



upper-end of the village, head to *Fothergills* for gourmet treats or *Field and Vine* for a well-stocked deli. There is a weekend market at *Blackberry Fair*.

### Pubs

All sectors of society are well catered for with many different types of pubs and also a popular student niteclub. The Village Quarter, one of the best areas in Dublin for alternative music, is just a short walk away.

## About Rathmines

Rathmines, where Kenilworth is located, is on the southside of Dublin, about 3 kilometres from the city centre. It is a very well-known area, with thriving commercial and social life and a young, diverse international population.

*All sectors of society are well catered for in the thriving social and commercial area, Rathmines.*

The famous green dome of the Mary Immaculate Church, can be seen for miles across the city. It was originally intended for St Petersburg but somehow ended up in Dublin. Other notable buildings of Rathmines include the clock tower and the library.

### Transport

Served by the green Luas line, Rathmines is also on countless bus routes and is just a 25 minute stroll from the city centre.

### Cinema

Swan Cinemas in the centre of Rathmines is the first cinema in Dublin custom-designed for Digital cinema and the latest 3D technology.

### Restaurants

Rathmines has a wide variety of restaurants and coffee shops for all tastes, from Irish 'fish and chips' to Chinese and Japanese cuisine.

### Shopping

Rathmines has three large supermarkets and the *Swan Shopping Centre* in the centre of the village. The *Oriental Emporium* sells an extensive range of Asian ingredients. At the



Rathmines is a very well-known area, with thriving commercial and social life and a young, diverse international population.



# Kenilworth JUNIOR SCHOOL

During July and August we run a school for young learners, aged 13-17, at our summer centre. During the remainder of the academic year we run programmes for groups of juniors as closed groups within our main school. The emphasis is on providing tuition in a happy, fun and stimulating environment. Classes are in the morning and there is a full activities programme in the afternoons and on Saturdays.

The Kenilworth Summer School takes place in the lovely premises of Terenure College, just ten minutes by bus from our main school. We have access to all the College's facilities, which include the sports fields, tennis courts, basketball courts, swimming pool and concert hall. Terenure College is located directly opposite Bushy Park, one of Dublin's most beautiful public parks and the Summer Centre makes use of the park for many different activities ranging from a treasure hunt to sports.



*Kenilworth Summer Centre at Terenure College*





The cross-cultural aspect of the programme is very important, giving students the chance to mix together and enjoy a varied programme of sporting and cultural activities. Students get to meet other young people from different countries and cultures and form new friendships that they often treasure for long after their course has finished.

## Junior School Timetable

Monday - Friday	
9.30 - 11.00	Class 1
11.00 - 11.30	Break
11.30 - 13.00	Class 2
13.00 - 14.00	Lunch
14.00 - 16.30	Supervised Afternoon Activities
*We also organise occasional evening activities for students during the month, such as a supervised junior disco.	
Saturday	
Full day excursions every Saturday during July and August.	
Sunday	
Free.	

## Junior School Staff

Working together between the Main School and the Summer Centre, the Kenilworth staff keep in constant communication to provide the most enjoyable and productive experience possible for everyone.

We have a designated Summer Centre Director, a Student Welfare Officer/ Accommodation Officer and an Activities Coordinator who are all on hand as a support to teachers, students and Group Leaders. We work with and involve the Group Leaders who arrive with the students as much as possible. We try to organise at least one night (eg. a barbecue in the main school) where all the staff and Leaders get to socialise together.

- Many of our summer teachers have been with us for a number of years and are extremely experienced in running a centre for young learners. They will often take on many extra duties and responsibilities outside of class.
- Many of the teachers are involved in the Social Programme and this gives them a chance to spend time with the students outside of a class situation.



## Accommodation for Junior Students

Accommodation for our Summer Centre is Host Family only as we find that this provides the richest cultural experience for the students.

- Groups of junior students arriving on the first day are collected by bus at the airport and taken to the school where they meet their new host families.
- Host families will show the student where they can get the bus to go to school. For young learners, there will always be other students in host families nearby getting the same bus.
- Host families provide a room with a study desk, laundry facilities, breakfast, evening meal and a packed lunch from Monday to Friday and breakfast, lunch and evening meal at weekends.
- If students are under 15 years old, they must be home in their host family before 10pm at night. If they are under 18, they must be home by 11pm.
- If students have a problem in their host family or are not happy for some reason, they need not suffer in silence. They can talk in confidence to any of the staff of the school.



## First day at school

- All junior students are given an Introductory Pack on arrival which includes maps, a Student Handbook and information about the school, the host families and about Dublin and Ireland in general.
- We start with a gentle introduction to the course. We gather students together and after a short introductory speech from the Director we usually begin with a team activity involving a three-legged race and a quiz on what they know about Irish culture. We do an oral placement activity called 'The Marketplace' where students have to interact in English and at the end self-assess their respective language abilities compared to other members of their group.
- There is a written placement test (the Oxford Quick Test) and we use a combination of the written test and the self-assessment to ascribe students to classes.
- There is a 'Hopes and Fears' session where students have an opportunity to ask any questions and talk about any worries they have.
- School rules are explained and students are helped to use their maps to locate each others' host families and other important landmarks around the city.
- In the afternoon, students are taken into the city centre and given an orientation tour. They are shown the main city landmarks such as Trinity College and the Spire, the shopping areas and also where to get buses back to their host family.



## Classes in the Junior School

### What will students study in class?

The first class tends to be more based on book work. It focuses on grammar, vocabulary and developing the four main skills – Speaking, Writing, Reading and Listening.

In the second class students get the chance to improve their confidence in English through free-practice activities, games and projects.

During class, students learn about Irish culture – music, food, sport, dance, history etc.

We link in DVD presentations with our Sports and Cultural activities in the afternoon. For example, we will show students Irish dancing or Gaelic Football and later they will do it themselves.

### What are the students' responsibilities in class?

- Participation in class activities
- Respect towards teachers and towards fellow classmates

### What if a student is not happy with their class?

- If any student has any problem in class, they can talk first to one of their teachers. They can also talk to the Student Welfare Officer or their group leaders. We will always try to help with a genuine problem.



Classes in the Junior School





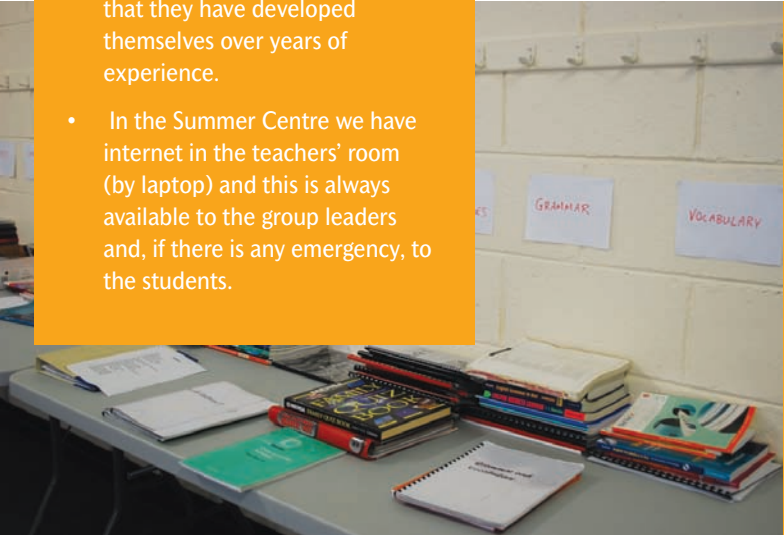
## Materials

- We have a full range of teaching materials in our Summer Centre. If students have any special requests – exam preparation, extra materials for home study/reading etc, we have extensive materials and experience to help them.
- We generally do not require the students to use a specific course book, unless this is requested as part of their programme. We have a syllabus that we have developed over many years and so, in addition to using the latest course-books and supplementary materials, we use lots of specially developed summer school activities, music, DVDs and Irish cultural materials. Many of our senior teachers use class materials and project-based tasks that they have developed themselves over years of experience.
- In the Summer Centre we have internet in the teachers' room (by laptop) and this is always available to the group leaders and, if there is any emergency, to the students.

## Junior School Social Programme

The Social programme is an integral part of the Summer School.

Kenilworth organizes many extra-curricular activities such as lectures, videos, barbeques, excursions outside the city, tours of galleries and museums or trips to one of Dublin's summer festivals. We try to offer as varied a programme of sporting and cultural activities as possible and link in cultural trips with class project work and competitions.



## Sample Junior School Social Programme

Monday 28 July	City Centre Orientation
Tuesday 29 July	Sports – Focus on Gaelic Football
Wednesday 30 July	Trip to National Museum
Thursday 31 July	Cine Club – Film
Friday 1 August	Treasure Hunt in Bushy Park
Saturday 2 August	Trip to Howth – Cliff Walk or swimming
Monday 4 August	Sports – Focus on Hurling
Tuesday 5 August	Chester Beatty Library (in Dublin Castle)
Wednesday 6 August	Temple Bar Circus Festival
Thursday 7 August	Céili – Irish Dancing
Friday 8 August	Sports – Cricket
Saturday 9 August	Bray Summerfest Street Festival – Walk along the Beach or Climb Bray Head or swimming
Monday 11 August	Sports – Ultimate Frisbie
Tuesday 12 August	National Gallery
Wednesday 13 August	Trip to Dublin Botanic Gardens
Thursday 14 August	Collins Barracks / Evening Activity: Junior Disco
Friday 15 August	Inter-Schools Charity Football Competition
Saturday 16 August	Trip to Croke Park Stadium
Monday 18 August	Sports – Tag Rugby
Tuesday 19 August	Bowling
Wednesday 20 August	Sports – Mixed Tag Rugby Competition
Thursday 21 August	Free for Shopping
Friday 22 August	Table Quiz/ Presentation of Prizes/ Goodbye Party

Note 1: In cases of bad weather indoor games / sports / videos will be organised at the school

Note 2: Typical afternoon activities begin at 14:00 and end at 17:00

*We try to offer as varied a programme of sporting and cultural activities as possible...*



*The cross-cultural aspect of the students' experience in Dublin is very important and the Social Programme is a big part of the Summer School.*





Ultimate Frisbie, hanging out and board games (for those rainy days!)

### Sample Worksheet from one of the cultural trips which we link in with class project work

#### NATIONAL GALLERY OF IRELAND – WORKSHEET

##### Milltown Wing:

1. In Room 19, 'Irish Paintings', what strange colour are the trees in Roderick O'Connor's post-impressionist painting Farm at Lezaven? \_\_\_\_\_
2. In Room 17, the painting The Opening of the Sixth Seal by Irish artist Francis Danby talks about a subject that was very controversial in the 1820s. If you look closely at the middle of the painting, you can see that part of it was once cut out by a knife. What controversial subject does it talk about? \_\_\_\_\_
3. In Room 42, the Caravaggio room, how old was Caravaggio when he painted the picture, The Taking of Christ? \_\_\_\_\_
4. In the painting by Johannes Vermeer in Room 40, what is the lady writing? \_\_\_\_\_
5. In Room 37, there are paintings of which two saints by the Dutch painter Peter Paul Rubens (one of them is also painted by El Greco)? \_\_\_\_\_
6. In Room 28, the Italian Renaissance painter Titian (Tiziano) painted a portrait of which meal? \_\_\_\_\_

##### Dargan Wing:

7. In Room 21, 'Irish Life through the Centuries', there are many paintings by John Butler Yeats, including portraits of his two famous sons (one was an artist, the other was a writer). What are the names of his two sons?  
\_\_\_\_\_
8. In Room 21, there is also a portrait by Louis le Brocouy of a famous Irish rock star. Who is the rock star?  
\_\_\_\_\_
9. In Room 21, there is a portrait of the first woman president of Ireland. What is her name? \_\_\_\_\_
10. In Room 23, the French impressionist Camille Pissarro painted which flowers? \_\_\_\_\_
11. Also in Room 23, which city is mentioned in the title of Van Gogh's painting? \_\_\_\_\_

##### Beit Wing:

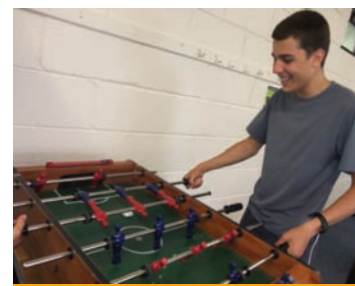
12. In the Yeats Museum, how many horses can you count in the painting, Above the Fair? \_\_\_\_\_
13. In Room 33, what is the name of the saint painted by El Greco? \_\_\_\_\_
14. Also in Room 33, the first known painting of Spanish painter Velazquez shows a kitchen maid at which meal? (It is the same meal represented by Titian!) \_\_\_\_\_

##### Millennium Wing:

15. And finally, how much does an espresso cost in the Gallery Café? \_\_\_\_\_

##### What is your favourite painting in the Gallery? Why? (100 Words)

(There will be prizes for the best answers!)



### Cultural and Fun Afternoon Activities

We take students bowling or to Quazar, have a Treasure Hunt, a Table Quiz, a Talent Show and a supervised junior disco. We have a home-made cinema room where we can show DVDs of films and a games room with table football and board games if the weather is too bad for outdoor sports. We also run a small shop.



## Weekend Activities

Some of our Junior students in Bray, Howth and Croke Park

## Junior School Sports Activities

- We try to teach students new sports that are popular in Ireland, such as Gaelic Football, hurling, tag rugby (non-contact), cricket and Ultimate Frisbie. We usually show them a video presentation of each sport and then have a skills session before playing the game.
- The idea of all sports activities is to actively involve as many students as possible in enjoyable structured activities, regardless of differing abilities and experience.
- Sports activities also include sports that students will be familiar with such as football, basketball, volleyball etc. There is a Public swimming pool in the grounds of Terhune College and we can get students a discounted entrance price to this facility. We have a Sports Day with prizes.

*The idea of all sports activities is to actively involve as many students as possible in enjoyable structured activities...*

## Kenilworth Rules

Kenilworth rules are for the safety and well-being of all students. We deal with discipline initially by stressing to students the need to respect each other, their teachers, the school, their group leaders and their host families. We also, of course, strive to show the same respect back to them. Any issues which require disciplinary procedures are the responsibility of the Director and Director of Studies and, depending on the circumstances, he will act in consultation with Senior Staff, teachers, group leaders and the student themselves.

## Student Welfare Officer

- We are interested in the development of our junior students as a whole, not just in their academic progress.
- We understand that there are often varying reasons for students' unhappiness or difficulties during their stay in Ireland.
- We have a dedicated Student Welfare Officer who works closely with group leaders and teachers to deal with students who have any problems, for example, accompanying a student who needs to see a doctor or just being available to talk to someone who is feeling homesick or unhappy.



*We try to teach students new sports that are popular in Ireland, such as Gaelic Football, hurling, tag rugby...*





*Dublin is a vibrant young city, full of things to do and places to visit for our Junior students. It also provides a safe learning environment in which to improve your English and experience life away from home.*





## Being Safe

We take our responsibilities for looking after our Junior students extremely seriously and we try to offer them as much guidance as possible about safety and well-being during the stay in Ireland. Right down to the smallest things, for example.

## Sample Advice from our Student Handbook

### How to cross the road in Ireland

1. Remember – some of the rules of the road may be different from your country.
2. Always look right for traffic!
3. At traffic lights, wait for the 'green man' before you cross. Do not walk out in front of traffic and expect it to stop.
4. If you are in a large group of people crossing the road, you must take individual responsibility. If the 'green man' changes to a 'red man' while you are still in the middle of the road, the cars have right of way. They will go!

### Getting the bus

1. Have your bus ticket ready before the bus arrives.
2. If you are in a big group waiting for a bus, leave room on the pavement for pedestrians to pass.
3. When the bus arrives, if you are in a big group, get on the bus as quickly as possible. The other passengers will be waiting for you.
4. If you see a very old or sick person, or a pregnant woman, it's good manners to give them your seat. Irish people often thank the bus driver as they get off.

## Looking after each other

We encourage students to look out for each other, help each other in class and if they see any student who is shy or on their own, make them part of the group. They are all away from their home, in a new country. They are a family here.



*We take our responsibilities for looking after our students extremely seriously and want them to fully enjoy all Ireland has to offer.*



*We encourage students to look out for each other...*





From everybody  
at Kenilworth –  
Hope to see you soon  
in our Summer  
School!

## Experience Dublin and Ireland!

We encourage our Junior students to experience as much as possible of Ireland, Dublin and its culture.

- Ireland has different food, a different history, a different language... Different is good!
- Irish people are a little bit different too, but if you smile, probably they'll smile too. If you talk to them, they'll probably be happy to talk to you...not so different from people in any other country.
- Dublin is a modern European capital with clear spoken English and a rich history and culture. Enjoy it! We try to give students as much information as possible about the city they will be living in, eg. Events, places to visit etc.



We encourage our Junior students to experience as much as possible of Ireland, Dublin and its culture.





Kenilworth Language Institute

Kenilworth Language Institute  
4 Kenilworth Square, Dublin 6, Ireland.

Tel: +353 1 497 1499  
Fax: +353 1 497 1499  
E-mail: [info@kenilworthinstitute.ie](mailto:info@kenilworthinstitute.ie)



[www.kenilworthinstitute.ie](http://www.kenilworthinstitute.ie)